

# Powder Coating Finishes



## Enhanced Durability

- Proven track record of hardness and durability
- Inherently resistant to damage
- Resilient to chemical and corrosive attack
- Provides maximum protection of the substrate
- Excellent results with spray and humidity testing

## Green Design

- Environmentally friendly
- Integral to contemporary building design/construction
- Ideal for government compliance
- Green alternative to liquid coatings
- Powder does not require high VOC solvents as used in liquid paints
- Zero VOC's (Volatile Organic Compounds)

## State of the Art Technology

- Cutting edge "GREEN" technology
- Small-batch, custom color capability
- Unparalleled high quality and durable finish

## Color Customization

- Wide range of colors
- Optimum's standard colors meet AAMA2604

## Certified Quality

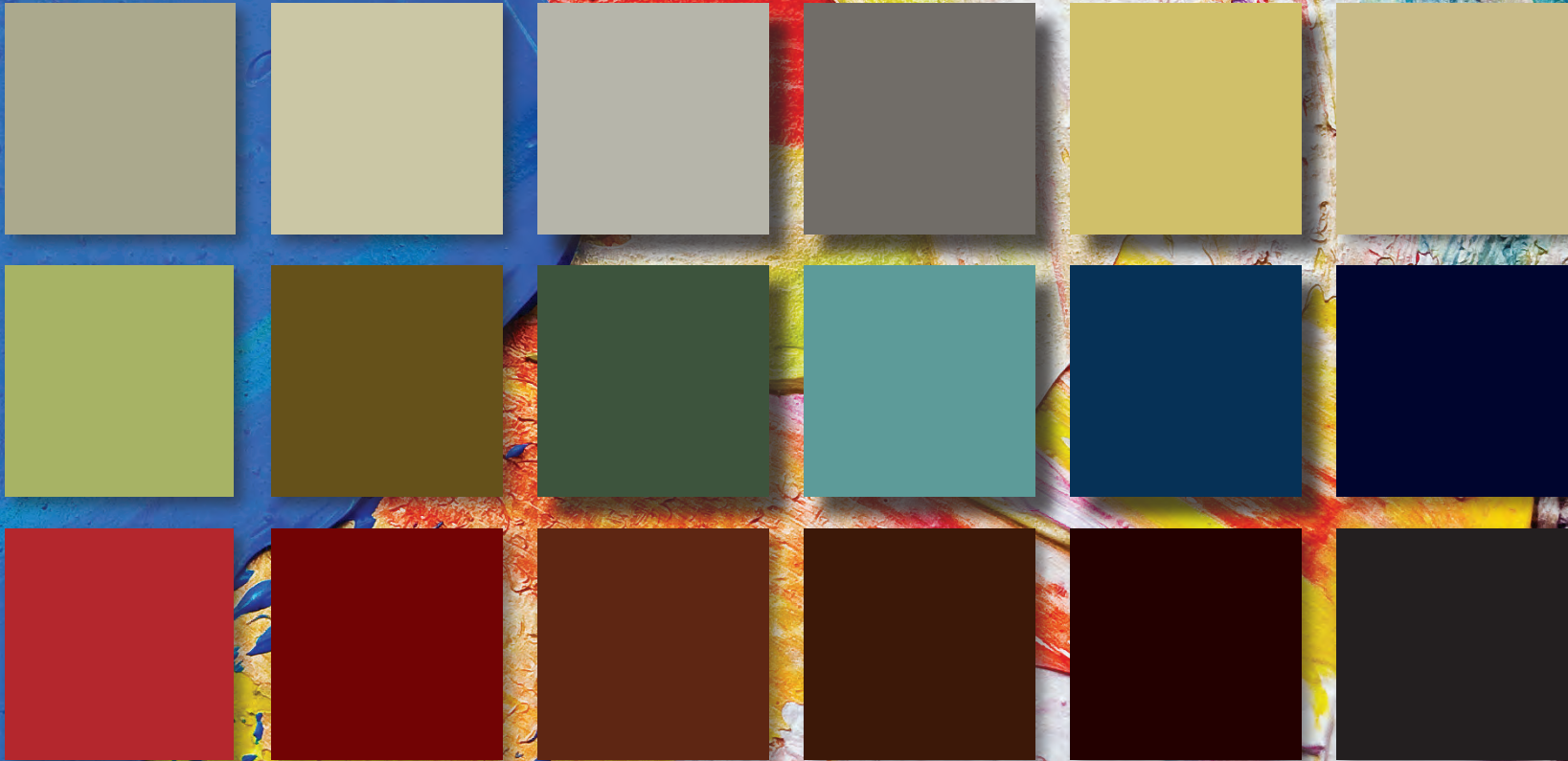
- Optimum applies its powder coatings in-house, allowing for better quality control of its finishes
- Optimum is a certified Powder Coat Applicator

© 2012 Optimum Window Mfg.

Optimum reserves the right to change content within, without prior notification.

# Color Chart

## POWDER COATING



845.647.1900  
OPTIMUMWINDOW.COM

sales@optimumwindow.com

28 CANAL STREET | ELLENVILLE, NY 12428

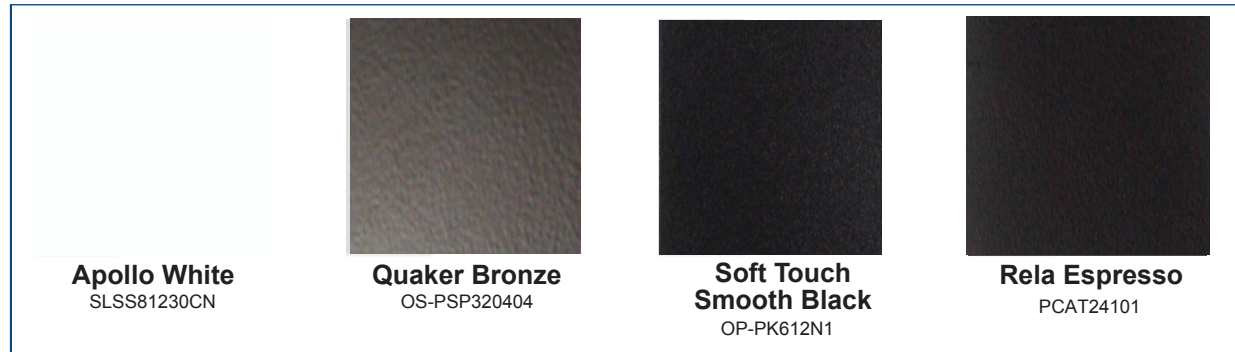


OPTIMUM  
WINDOW

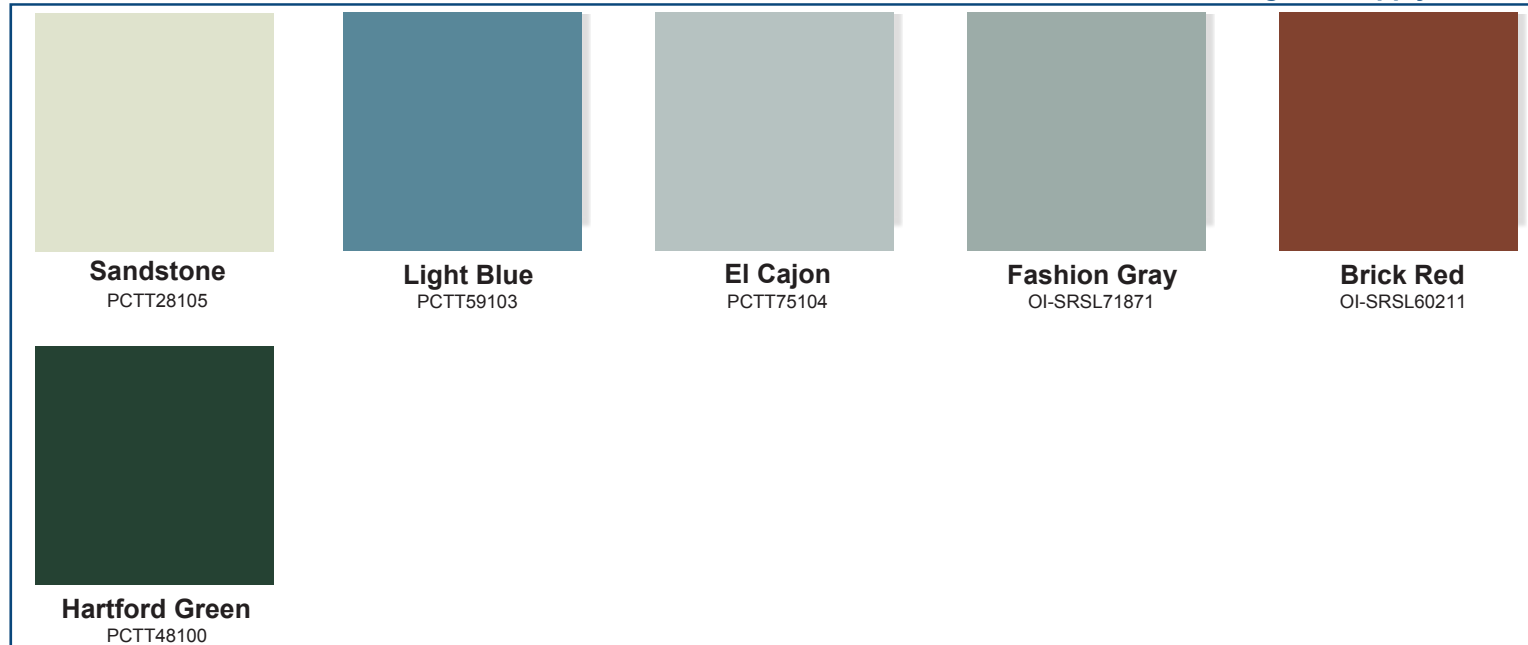
AMERICA'S MOST DIVERSIFIED STEEL WINDOW & DOOR MANUFACTURER



OPTIMUM WINDOW STANDARD COLORS - No Charge



OPTIMUM WINDOW STANDARD COLORS - Less than 10 Units = Additional Charge Will Apply



MOST POPULAR COLORS - Additional Charges Will Apply



MOST POPULAR COLORS - Additional Charges Will Apply



Shown are a selection of available colors. Contact Optimum Window Mfg. for other custom finishes. The samples shown here are representative only. Please consult with your sales representative for actual samples.

**\*\*Optimum Window Mfg. reserves the right to change specifications without notice\*\***

**\*\*The products represented have been prepared to replicate the actual powder coatings. Chips may vary slightly in color and gloss from actual coatings due to heat, light, material, and mfg. process.**