

OptimumWindow.com | 845.647.1900

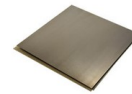
FULLY WELDED THERMALLY BROKEN COLD-ROLLED STEEL WINDOW & DOOR SYSTEM



PRODUCT DESCRIPTION

For the restoration of heritage buildings, Optimum offers the 6500 series thermo-insulating profiles for windows and doors. Large glazed areas, excellent Thermal Insulation and Acoustic Values, durability and light transmittance are the main characteristics of the 6500 series. It is considered an interpretation of the classic metal window using modern technology and materials for the central pairing in the case of double windows. Available in:

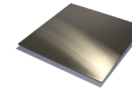
GALVANIZED COLD ROLLED STEEL



BRONZE



STAINLESS STEEL



COR-TEN STEEL



AUTHORIZED DIMENSIONS

| | MIN | MAX |
|------------------------|---------|----------|
| Casement | 18"X18" | 42"X90" |
| Projected | 14"X14" | 66"X48" |
| French/Double Casement | 36"X18" | 84"X90" |
| Single Door | 24"X72" | 48"X120" |
| French/Double Door | 48"X72" | 96"X120" |

Units may exceed maximum sizes listed through engineering, reinforcing profiles and/or hardware modifications. Contact an Optimum Window specialist for assistance.

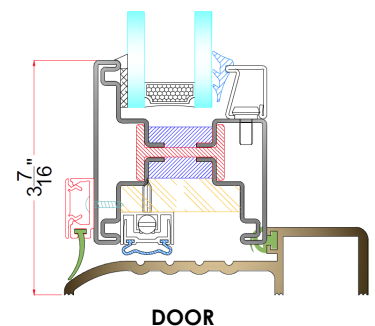
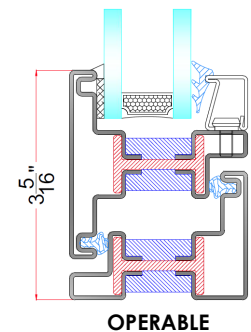
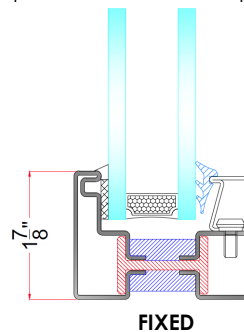


FEATURES

- Thermal break for high insulating performance
- Fully Welded Cold-Rolled Frame
- Undercoat Galvanized Steel
- Dual Weather-Stripping
- True Divided Lites & Applied SDLs available.
- Oversized Doors and Windows
- Bi-Metal Capabilities
- Zinc Rich Epoxy Primer
- Electrostatically applied, colored, polyester powder coated finish. Meets AAMA 2604 specification
- 10 year warranty on Powder Coated Finish.
- Non-Metallic Custom Color Match option available.
- Limited Operation Stops available.
- Multi-Point & Single-Point Locking Hardware available.
- Options for Premium and Custom Hardware sets available.
- Monolithic Glazing option available.

DETAILS

For complete set, visit: www.OptimumWindow.com



TECHNICAL SPECIFICATIONS

| | |
|-------------------------|--|
| Tested in Accordance w/ | AAMA/WDMA/CSA 101/I.S.2/A44U-11, ASTM E283, ASTM E331, ASTM E330 |
| Construction | Mitered, Welded frame and sash construction |
| Certification | NFRC Rated |
| Fabricated in the US | Yes |
| Glazing Infill | Can Accommodate Glazing Thicknesses from 1" up to 1 5/8" |
| Weight (lbs/linear ft.) | 4.7374 lbs/lf total for Vent and Exterior Frame |