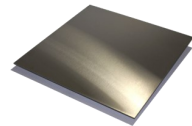




**PRODUCT DESCRIPTION**

Optimum's Thermally Broken Technology in the form of the RTS-430 line is renown for its thin sightlines and beauty. The RTS-430 Series also offers reliability, versatility and thermal-efficiency. Having surpassed vigorous testing requirements, the RTS-430 is proudly NFRC Certified. Optimum continues to work with architects that require custom designs for their applications, bringing performance and structural excellence together seamlessly; combining beauty and style with strength and reliability through the use of new computerized machinery for cutting, welding, punching, etc. The look is not simply distinctive, it is unique.

**304 STAINLESS STEEL MATERIAL**



| AUTHORIZED DIMENSIONS  | MIN     | MAX      |
|------------------------|---------|----------|
| Casement               | 18"x18" | 42"x90"  |
| Projected              | 14"x14" | 66"x48"  |
| French/Double Casement | 36"x18" | 78"x90"  |
| Single Door            | 24"x72" | 42"x114" |
| French/Double Door     | 48"x72" | 84"x114" |

*Units may exceed maximum sizes listed through engineering, reinforcing profiles and/or hardware modifications. Contact an Optimum Window specialist for assistance.*

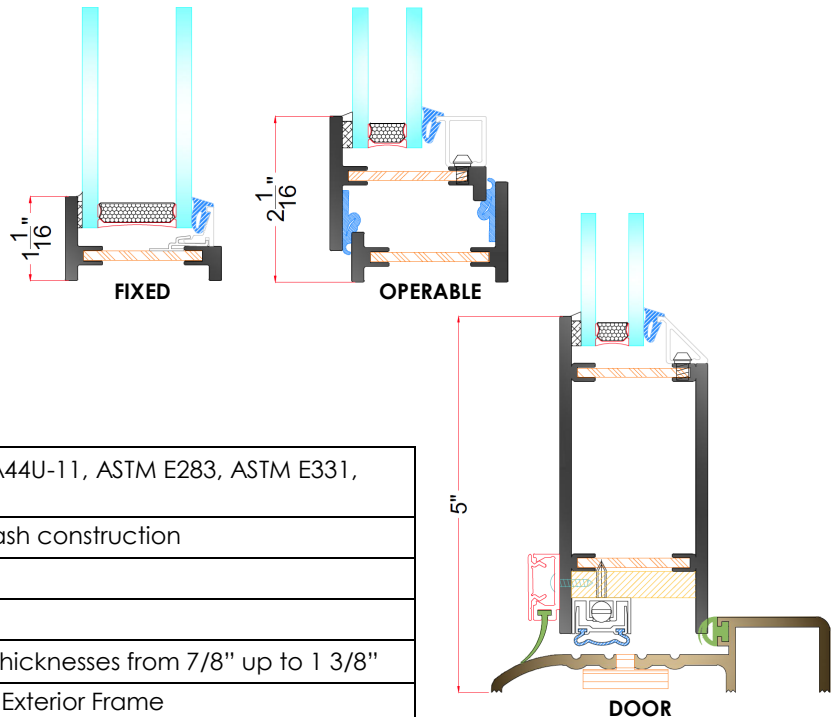


**FEATURES**

- Thermally Broken Hot-Rolled Steel window sections
- Stainless Steel 304 Material; Corrosion resistant
- 1 15/16" exterior frame depth
- EPDM Weather-Stripping
- Excellent Thermal Values
- True Divided Lites & Applied SDLs available.
- Zinc Rich Epoxy Primer
- Limited Operation Stops available.
- Multi-Point & Single-Point Locking Hardware available
- Options for Premium and Custom Hardware available
- Electrostatically applied, colored, polyester powder coated finish. Meets AAMA 2604 specification
- 10 year warranty on Powder Coated Finish.
- Monolithic Glazing option available.
- Non-Metallic Custom Color Match option available.

**DETAILS**

For complete set, visit: [www.OptimumWindow.com](http://www.OptimumWindow.com)



**TECHNICAL SPECIFICATIONS**

|                         |  |
|-------------------------|--|
| Tested in Accordance w/ | AAMA/WDMA/CSA 101/I.S.2/A44U-11, ASTM E283, ASTM E331, ASTM E330 |
| Construction            | Mitered, Welded frame and sash construction                      |
| Certification           | NFRC Rated   |
| Fabricated in the US    | Yes  |
| Glazing Infill          | Can Accommodate Glazing Thicknesses from 7/8" up to 1 3/8"       |
| Weight (lbs/linear ft.) | 3.9438 lbs/lf total for Vent and Exterior Frame                  |