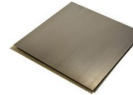




PRODUCT DESCRIPTION

For the restoration of heritage buildings, commercial and residential applications, Optimum offers the 5500 series of Cold-Rolled Steel profiles for windows and doors. Large glazed areas, durability and light transmittance are the main characteristics of the 5500 series. It is considered an interpretation, using modern technology and materials, of the classic metal window for the central pairing in the case of double windows. Available in:

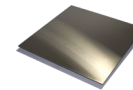
GALVANIZED COLD ROLLED STEEL



BRONZE



STAINLESS STEEL



COR-TEN STEEL



AUTHORIZED DIMENSIONS

	MIN	MAX
Casement	18"x18"	42"x90"
Projected	14"x14"	66"x48"
French/Double Casement	36"x18"	84"x90"
Single Door	24"x72"	48"x120"
French/Double Door	48"x72"	96"x120"

Units may exceed maximum sizes listed through engineering, reinforcing profiles and/or hardware modifications. Contact an Optimum Window specialist for assistance.

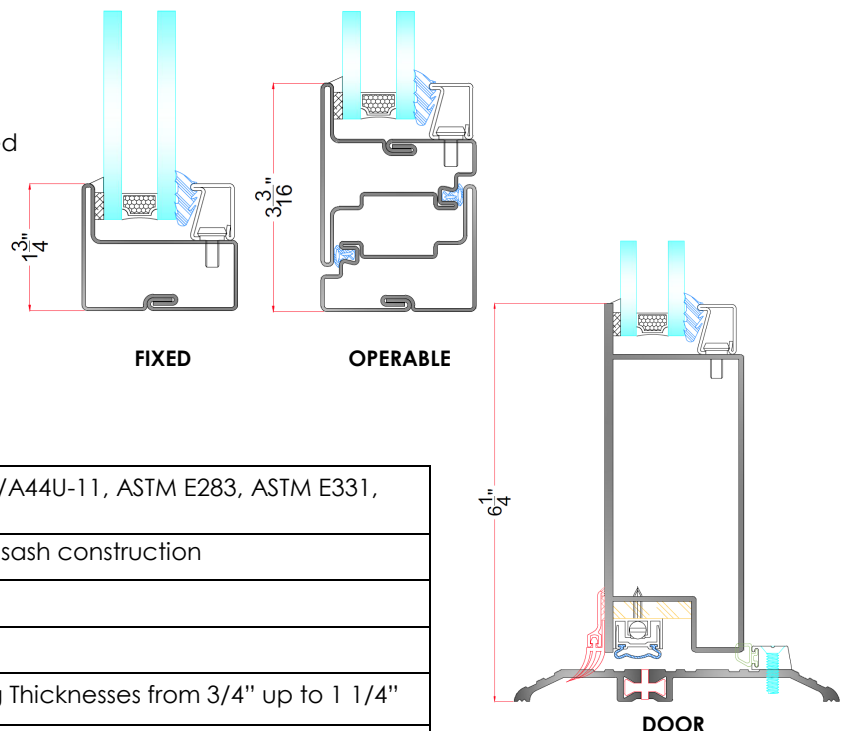


FEATURES

- Fully Welded Cold-Rolled Frame
- Undercoat Galvanized Steel
- Dual Weather-Stripping
- True Divided Lites & Applied SDLs available.
- Oversized Doors and Windows
- Bi-Metal Capabilities
- Zinc Rich Epoxy Primer
- Electrostatically applied, colored, polyester powder coated finish. Meets AAMA 2604 specification.
- 10 year warranty on Powder Coated Finish.
- Non-Metallic Custom Color Match option available.
- Limited Operation Stops available.
- Multi-Point & Single-Point Locking Hardware available
- Options for Premium and Custom Hardware sets available
- Monolithic Glazing option available.

DETAILS

For complete set, visit: www.OptimumWindow.com



TECHNICAL SPECIFICATIONS

US Testing/Compliant	AAMA/WDMA/CSA 101/I.S.2/A44U-11, ASTM E283, ASTM E331, ASTM E330
Construction	Mitered, Welded frame and sash construction
Certification	NFRC Rated
Fabricated in the US	Yes
Glazing Infill	Can Accommodate Glazing Thicknesses from 3/4" up to 1 1/4"
Weight (lbs/linear ft.)	3.931 lbs/lf total for Vent and Exterior Frame