

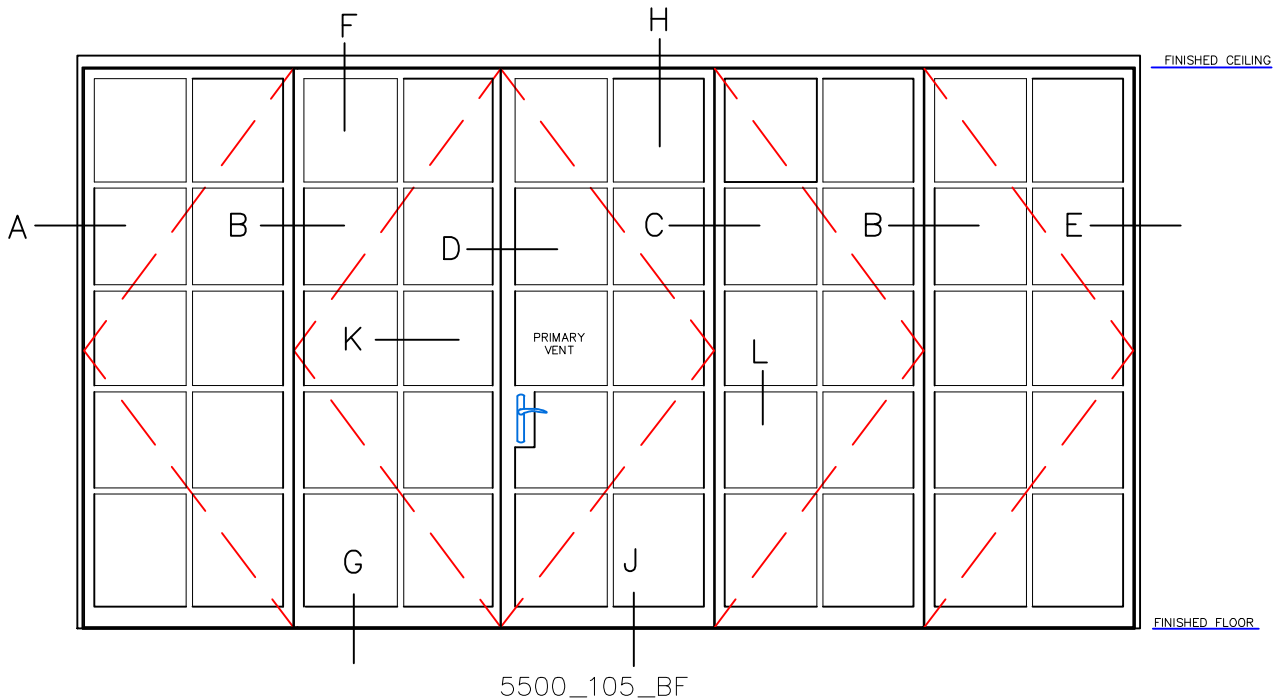
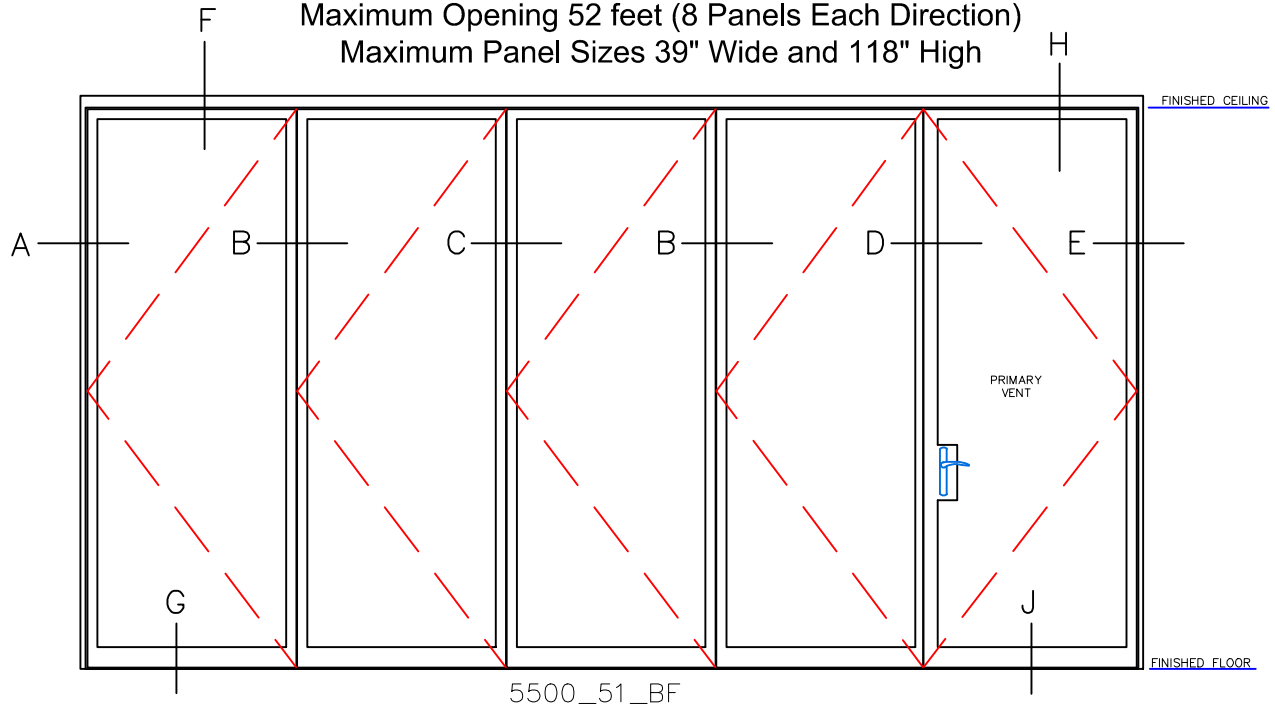
Typical Exterior Elevations

5500-BF SERIES

BI-FOLD DOOR
Scale: Not To Scale

Non-Thermally Broken
Cold Rolled Steel
Up To 1" Insulated Glass

Maximum Opening 52 feet (8 Panels Each Direction)
Maximum Panel Sizes 39" Wide and 118" High



28 Canal Street, Ellenville, NY 12428
Phone (845) 647-1900

BI-FOLD DOOR
Scale: Half Scale

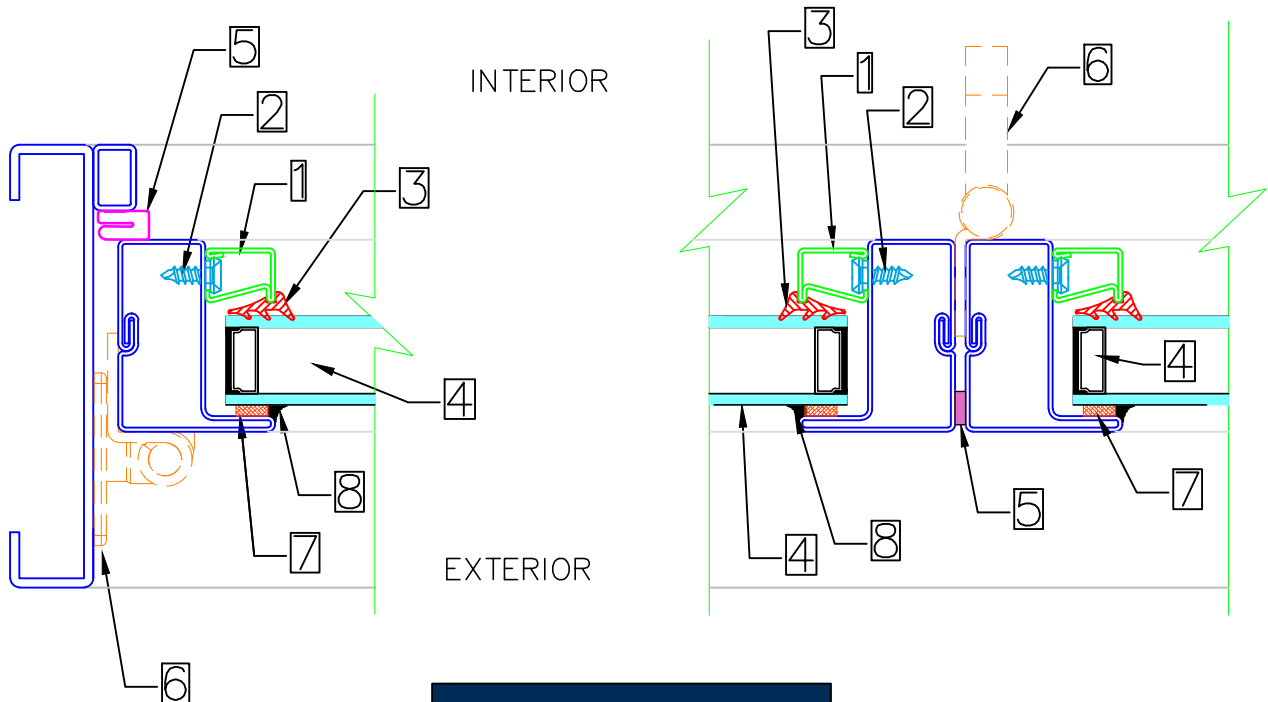
Non-Thermally Broken
Cold Rolled Steel
Up To 1" Insulated Glass

PAGE 2 OF 8

Maximum Opening 52 feet (8 Panels Each Direction)
Maximum Panel Sizes 39" Wide and 118" High

KEY (TYPICAL)

1. SNAP IN STEEL GLAZING BEAD
2. SNAP FASTENER
3. WEDGE GASKET
4. GLASS AND GLAZING (BY OTHERS)
5. WEATHER STRIPPING (EXTRUDED EPM)
6. BI-FOLD DOOR HARDWARE
7. GLAZING TAPE (BY OTHERS)
8. SILICONE CAP BEAD (BY OTHERS)



28 Canal Street, Ellenville, NY 12428
Phone (845) 647-1900

Typical Details

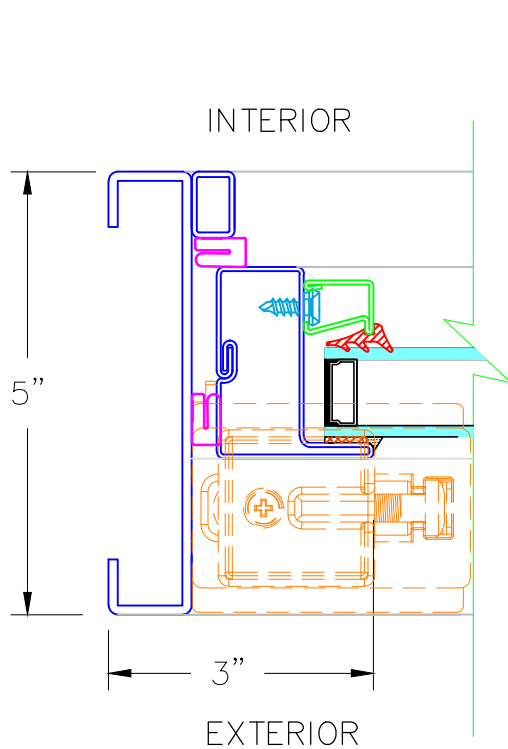
5500-BF SERIES

BI-FOLD DOOR
Scale: Half Scale

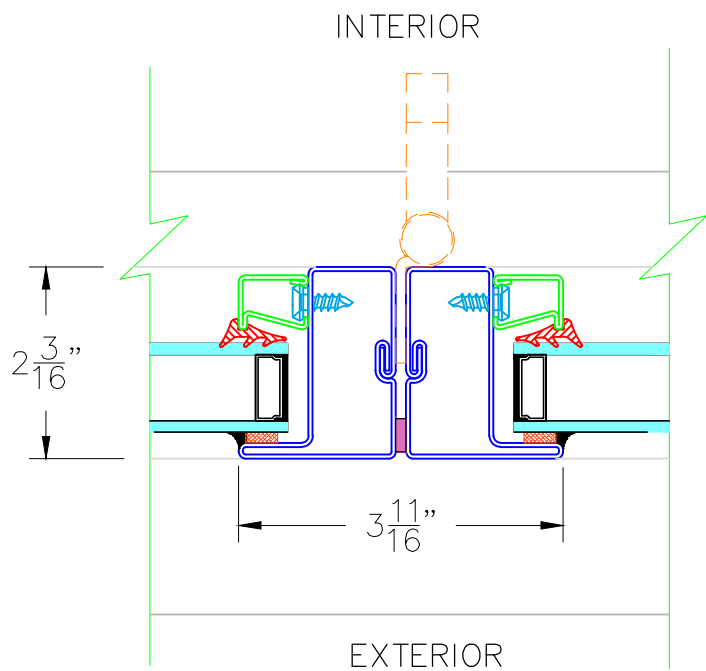
Non-Thermally Broken
Cold Rolled Steel
Up To 1" Insulated Glass

PAGE 3 OF 8

Maximum Opening 52 feet (8 Panels Each Direction)
Maximum Panel Sizes 39" Wide and 118" High



A TYPICAL JAMB



B TYPICAL MEETING RAIL WITH PULL HANDLE



28 Canal Street, Ellenville, NY 12428
Phone (845) 647-1900

Typical Details

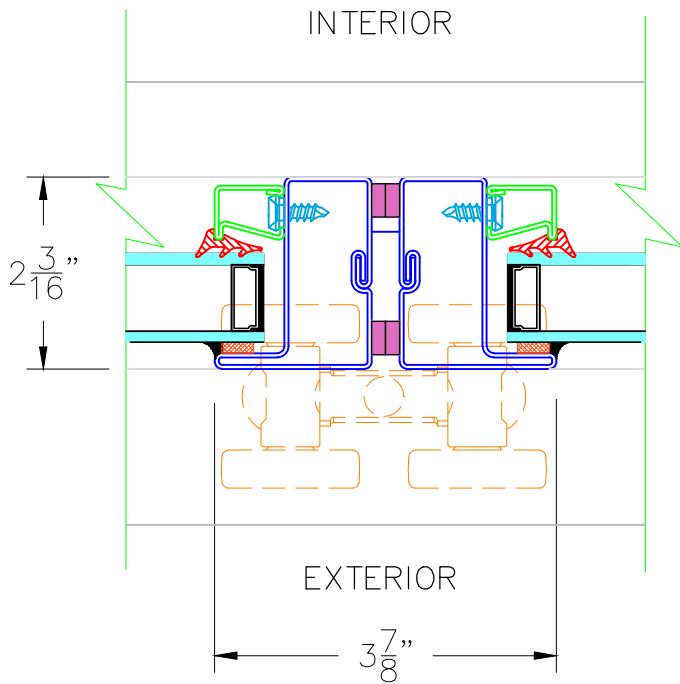
5500-BF SERIES

BI-FOLD DOOR
Scale: Half Scale

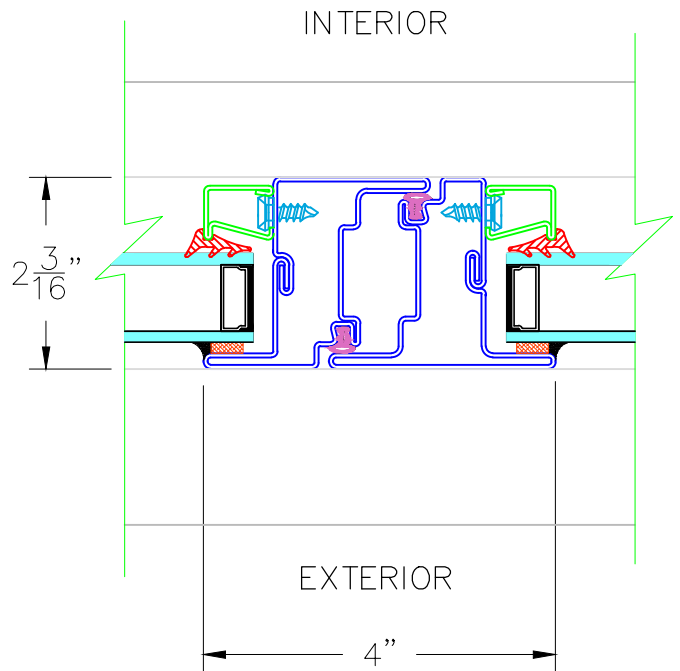
Non-Thermally Broken
Cold Rolled Steel
Up To 1" Insulated Glass

PAGE 4 OF 8

Maximum Opening 52 feet (8 Panels Each Direction)
Maximum Panel Sizes 39" Wide and 118" High



C TYPICAL MEETING RAIL



D TYPICAL FRENCH MEETING RAIL



28 Canal Street, Ellenville, NY 12428
Phone (845) 647-1900

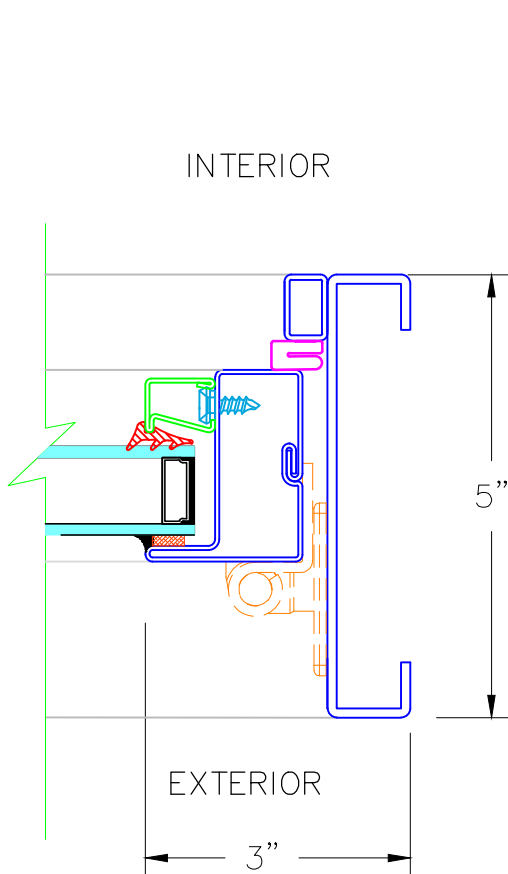
Typical Details

5500-BF SERIES

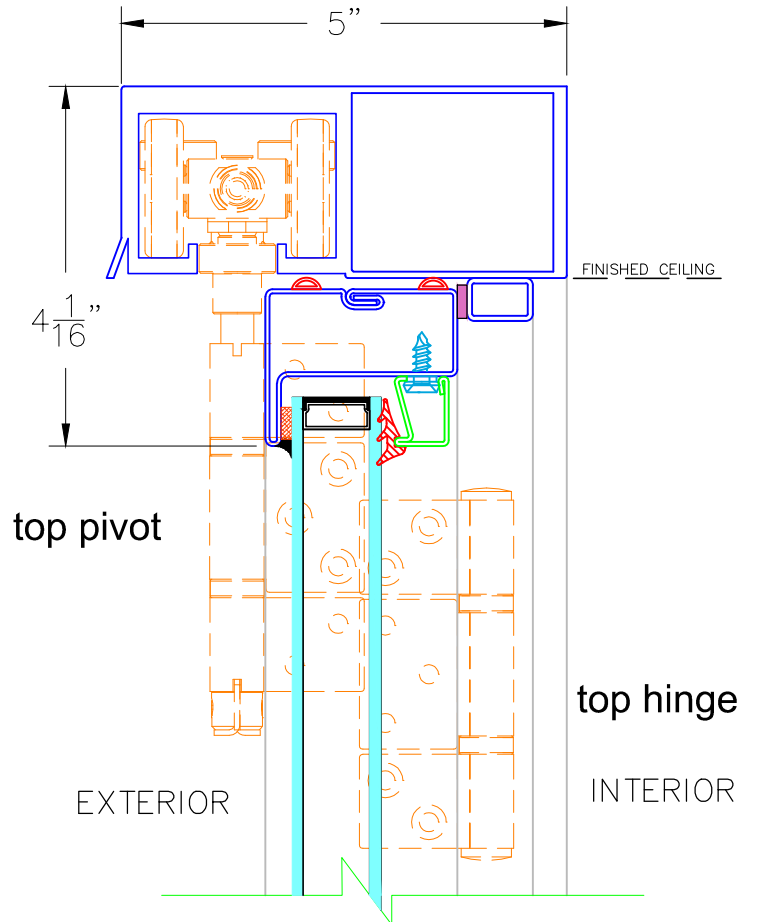
BI-FOLD DOOR
Scale: Half Scale

Non-Thermally Broken
Cold Rolled Steel
Up To 1" Insulated Glass

Maximum Opening 52 feet (8 Panels Each Direction)
Maximum Panel Sizes 39" Wide and 118" High



E TYPICAL JAMB FOR SWING PANEL



F TYPICAL HEADER @ BI-FOLD



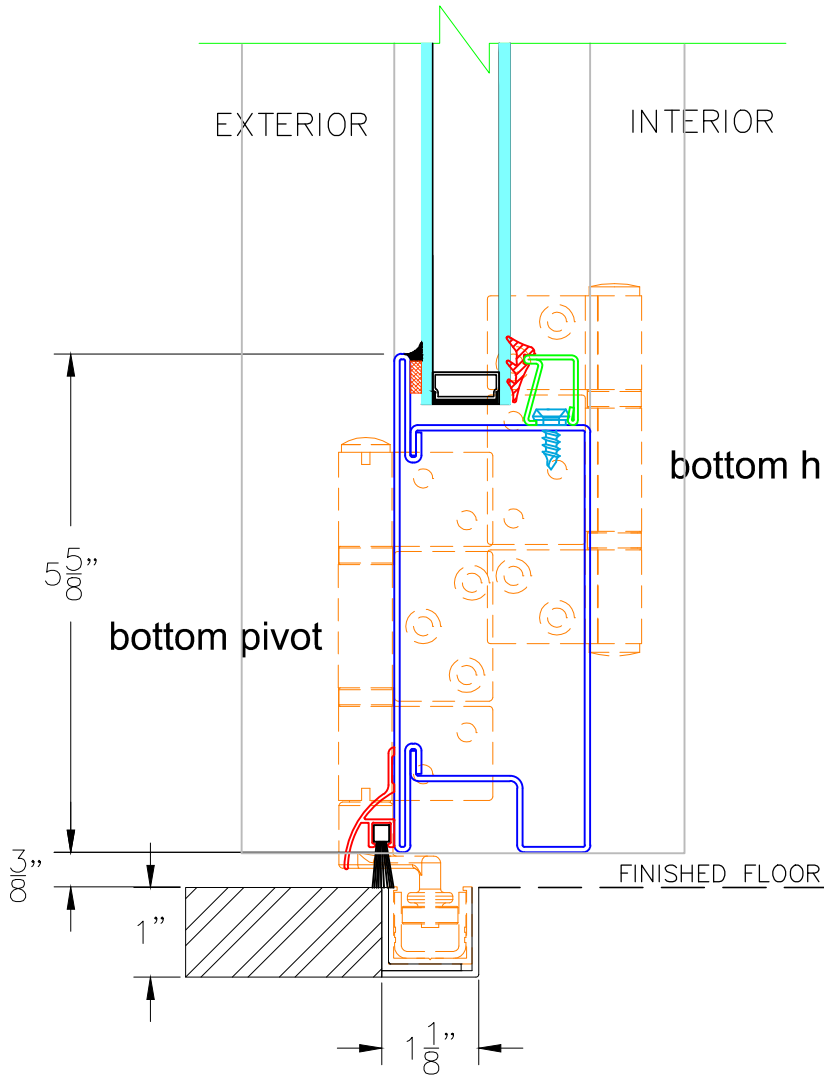
Typical Details

5500-BF SERIES

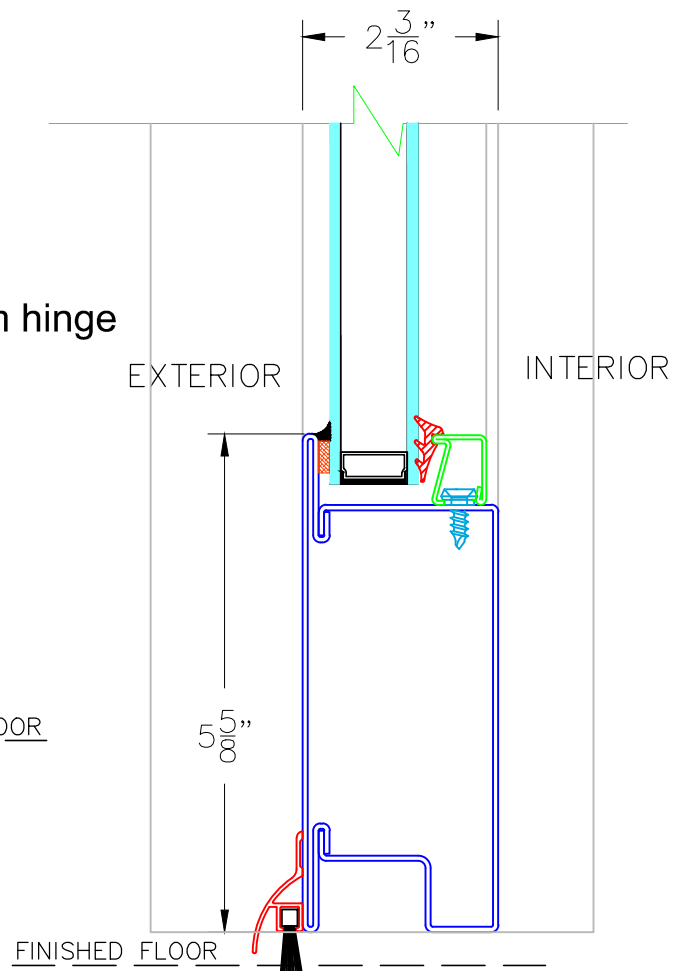
BI-FOLD DOOR
Scale: Half Scale

PAGE 6 OF 8

Non-Thermally Broken
Cold Rolled Steel
Up To 1" Insulated Glass
Maximum Opening 52 feet (8 Panels Each Direction)
Maximum Panel Sizes 39" Wide and 118" High



G TYPICAL BI-FOLD FLOOR CHANNEL



J TYPICAL THRESHOLD @ PRIMARY VENT



28 Canal Street, Ellenville, NY 12428
Phone (845) 647-1900

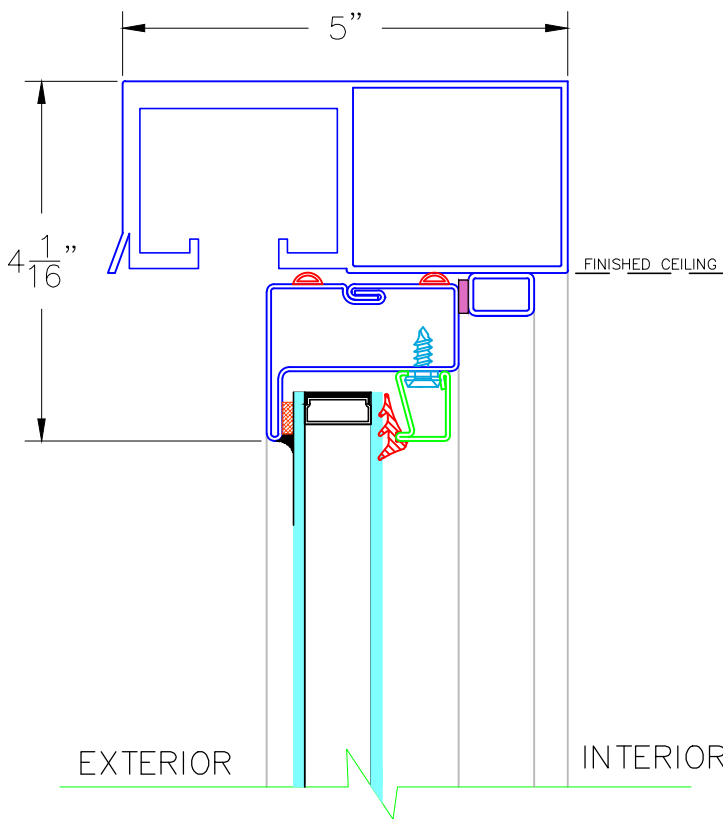
Typical Details

5500-BF SERIES

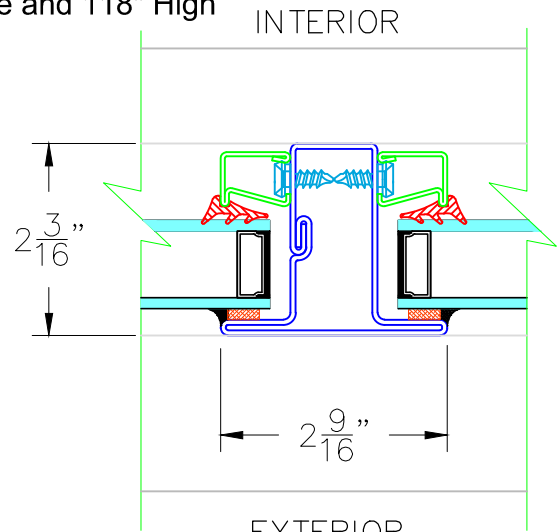
BI-FOLD DOOR
Scale: Half Scale

Non-Thermally Broken
Cold Rolled Steel
Up To 1" Insulated Glass

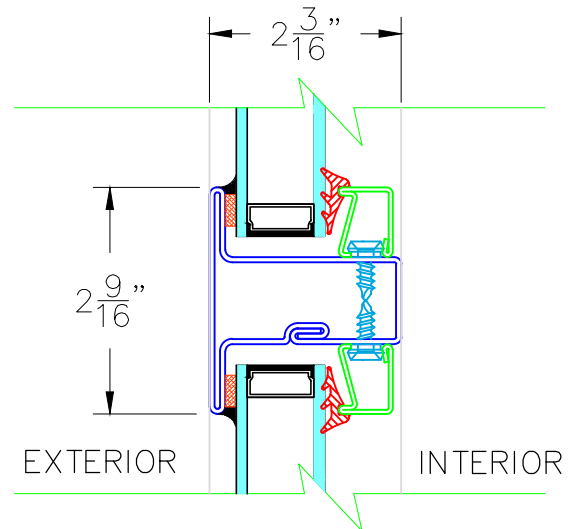
Maximum Opening 52 feet (8 Panels Each Direction)
Maximum Panel Sizes 39" Wide and 118" High



H TYPICAL HEADER @ PRIMARY VENT



K TYPICAL VERTICAL MUNTIN



L TYPICAL HORIZONTAL MUNTIN



Typical Details

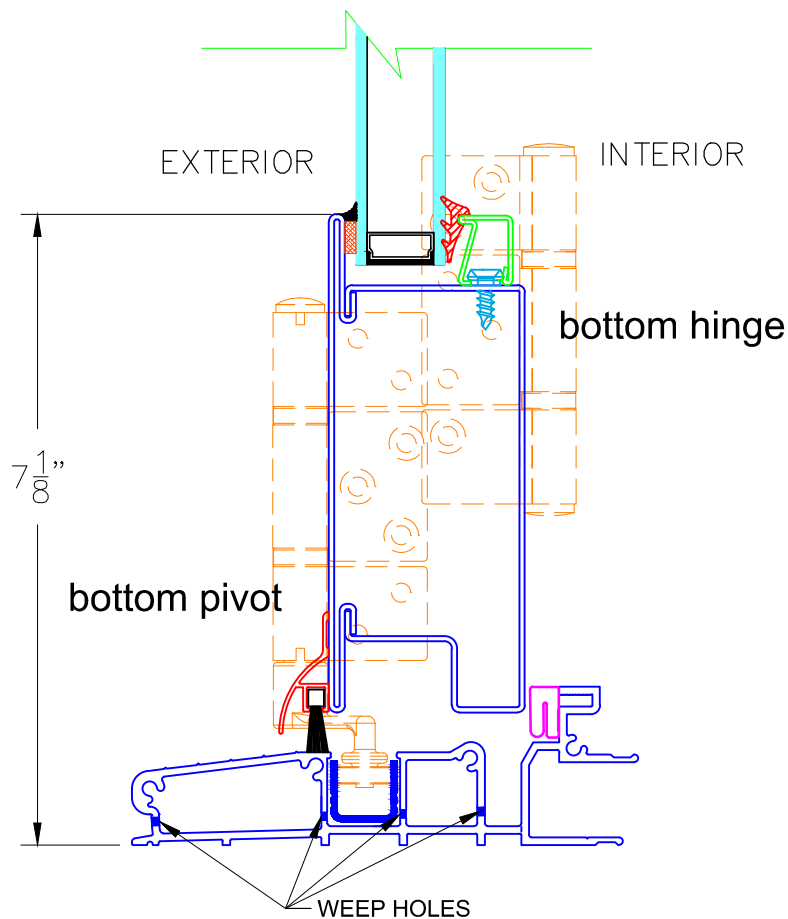
5500-BF SERIES

BI-FOLD DOOR
Scale: Half Scale

PAGE 8 OF 8

Non-Thermally Broken
Cold Rolled Steel
Up To 1" Insulated Glass
Maximum Opening 52 feet (8 Panels Each Direction)
Maximum Panel Sizes 39" Wide and 118" High

OPTIONAL TRACK



1 OPTIONAL BI-FOLD TRACK



28 Canal Street, Ellenville, NY 12428
Phone (845) 647-1900